



2024  
**IMPACT  
REPORT**  
HEALING PLACE FOR  
A HURTING WORLD

*Grace*  
CHURCH



We are excited about all that God is doing in our family of churches and in partnership with 58:12 Global. Thank you for believing in our vision and for your faithful generosity.

Let’s celebrate all that God did in 2024 and keep making radical moves to expand our gospel footprint in northeast Ohio, and around the world.

Our most fruitful days are ahead of us.



**Larry & Kendra Kaufman**  
Lead Pastor & 58:12 Global Leader  
330.893.3110 - Central Office  
330.231.3733 - Cell  
[allaboutgrace.org](http://allaboutgrace.org)



**BERLIN  
SUGARCREEK  
MILLERSBURG  
BREWSTER  
THE HILL**



# **DIRECTIONAL FRAMEWORK**

## **OUR VISION**

To be a healing place for a hurting world.

We desire to be a family of churches where hurting, vulnerable people can find hope and healing in Christ, and have a safe, loving community to belong to.

We desire to be a family of churches that build strong marriages and healthy families in a world where divorce is common, and families are fragmented.

We desire to be a family of churches where every Christ follower is being equipped and sent to their neighborhoods, schools, workplaces, and the nations to make disciples of Jesus Christ.

We desire to be a family of churches that multiplies our gospel influence by forming missional communities, sending go teams, utilizing gospel partnerships, and launching churches.

## **OUR VALUES**

Passionate Pursuit of Jesus  
Joyful Obedience to Scripture  
Prayerful Dependence on the Holy Spirit  
Relational Trust in Community  
Humble Service to Others

## **OUR STRUCTURE**

We are a staff led, elder governed, and a servant driven church with a desire to have a decentralized decision-making structure.

## **OUR CHURCHES**

We ask our family of churches to align with our directional framework, and provide opportunities for family ministry, discipleship pathways, and local/global outreach.



# BERLIN



550

**AVERAGE SUNDAY  
ATTENDANCE**



180

**PEOPLE IN  
SMALL GROUPS**



326

**VOLUNTEERS**



# SUGARCREEK



330

**AVERAGE SUNDAY  
ATTENDANCE**

81

**PEOPLE IN  
SMALL GROUPS**



187

**VOLUNTEERS**



# MILLERSBURG

195

AVERAGE SUNDAY  
ATTENDANCE



54

PEOPLE IN  
SMALL GROUPS



41

VOLUNTEERS





# BREWSTER

51

**AVERAGE SUNDAY  
ATTENDANCE**



26

**PEOPLE IN  
SMALL GROUPS**

31

**VOLUNTEERS**



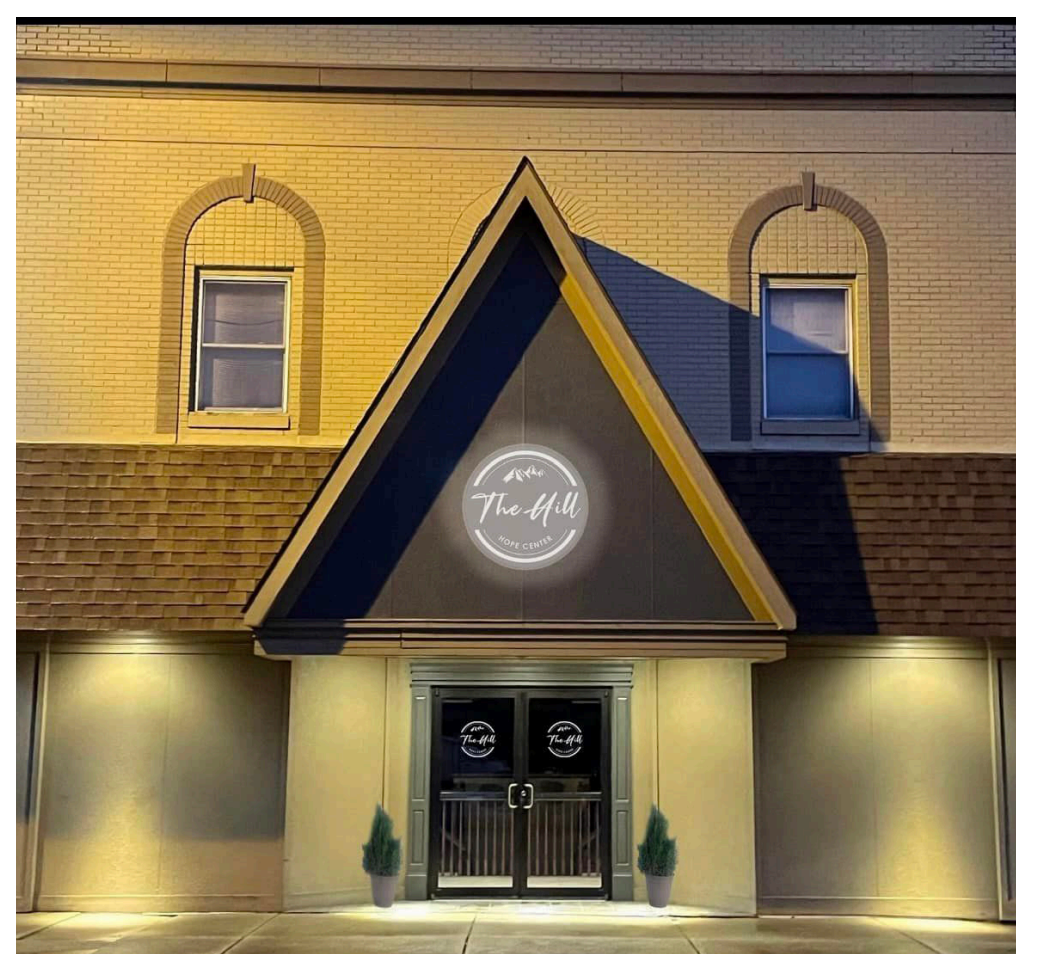
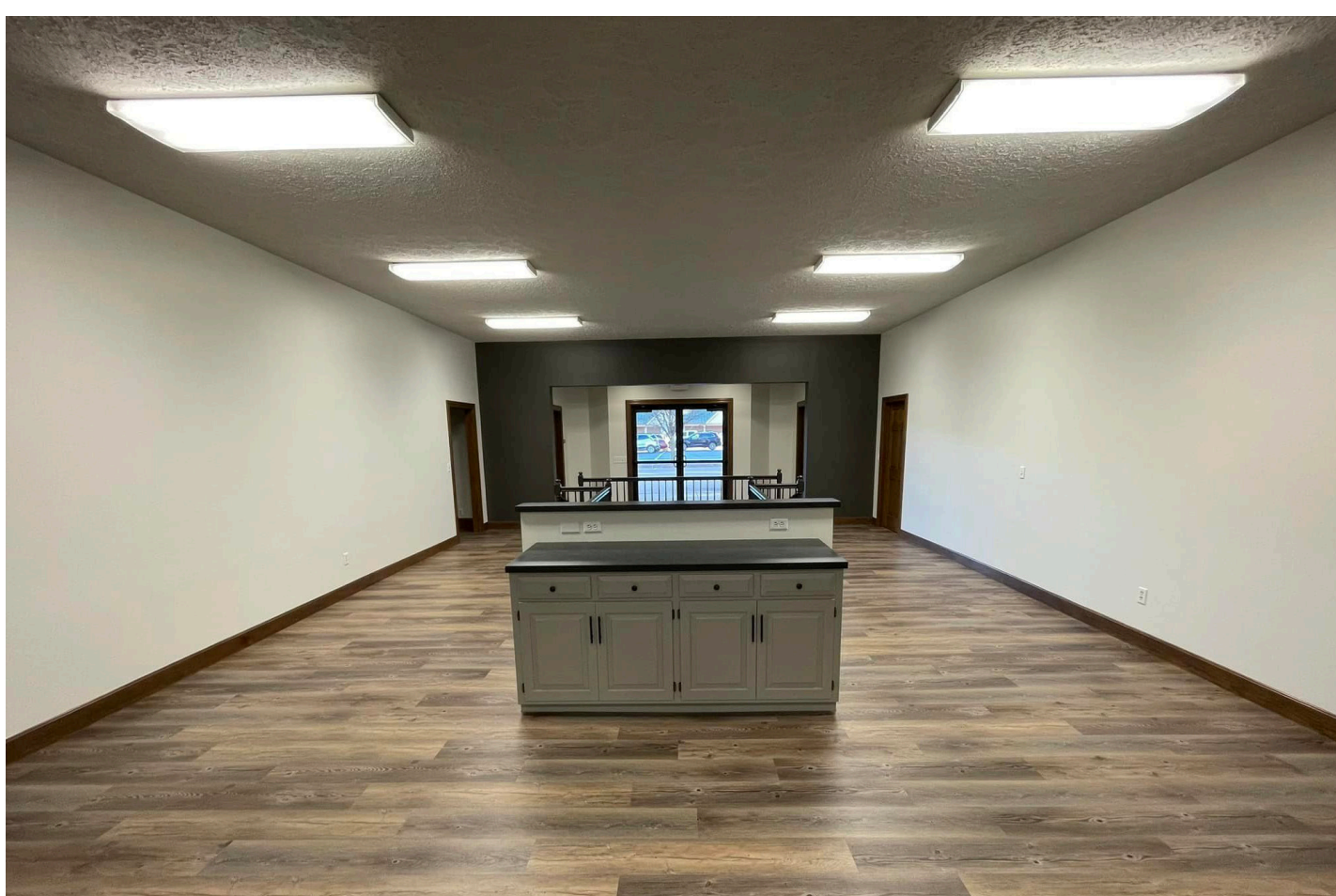


**A GRACE MISSIONAL COMMUNITY:**

# **THE HILL HOPE CENTER**

**2024 was the first year that the Hill Hope Center was open. A few highlights include a diaper and baby formula drive, clean up of the local parks, a Toy Share Event held the week before Christmas, and delivering 16 Thanksgiving meals to homeless people.**

**The Hill also hosts a showing of the Chosen Series once a month and holds regular worship nights.**



**THE CENTER IS LOCATED AT  
217 E. 3RD STREET  
IN UHRICHVILLE.**



# MAKING DISCIPLES



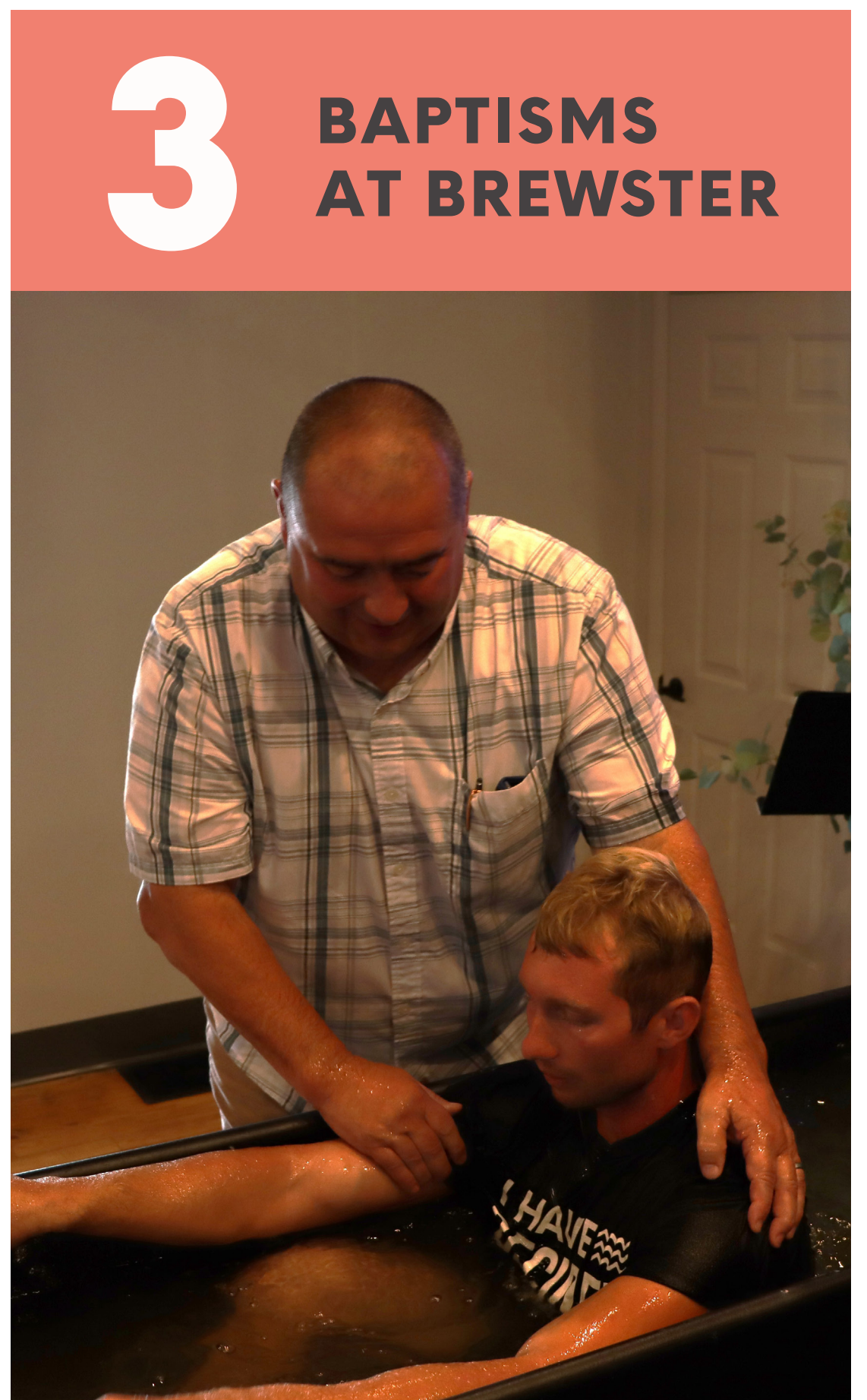
2

**BAPTISMS AT  
MILLERSBURG**



17

**BAPTISMS  
AT BERLIN**



3

**BAPTISMS  
AT BREWSTER**

12

**BAPTISMS AT  
SUGARCREEK**





# WORSHIP ARTS



## GOOD FRIDAY

Many local churches and approximately 2,500 people gathered at two locations to worship on Good Friday.



## EASTER

1,560 people came to one of our Grace campuses on Easter Sunday.

## CHRISTMAS EVE

On December 24th we had our Christmas Eve gatherings with over 1,200 people celebrating the incarnation of Jesus and how he is greater than our brokenness.





# FAMILY LIFE

175

AVERAGE KIDS SUNDAY  
ATTENDANCE ACROSS  
ALL CAMPUSES

---

220

GRACE KIDS VOLUNTEERS

---

26

PARENT  
COMMISSIONINGS

---

55

AVERAGE 5TH-8TH GRADE  
ATTENDANCE

---

45

AVERAGE HIGH SCHOOL  
ATTENDANCE

---

258

KIDS AND 115  
VOLUNTEERS  
PARTICIPATED IN VBS

\$7,250

RAISED AT VBS FOR 58:12 RESCUE  
AND 58:12 KENYA CAMPUSES



# STUDENTS



## 25 STUDENTS

Went on the summer mission trip to serve in the city of Louisville, KY.



## 12 STUDENTS

Went public with their faith in water baptisms.



## 30+ STUDENTS

Serving in different areas of the church.



## 8 STUDENTS

Participated in a 30 hour famine and raised \$3000+.



# THRIVE

A regional ministry of Grace Church for young adults ages 18-30s, married or single. We focus on connecting with people, faith that matters, and making a difference.

## 40-50

YOUNG ADULTS FROM THE COMMUNITY ATTENDING THRIVE MONTHLY

## 19

YOUNG ADULTS WENT ON MISSION TO COSTA RICA

## 12

YOUNG ADULTS WENT ON MISSION TO SEVILLE, SPAIN





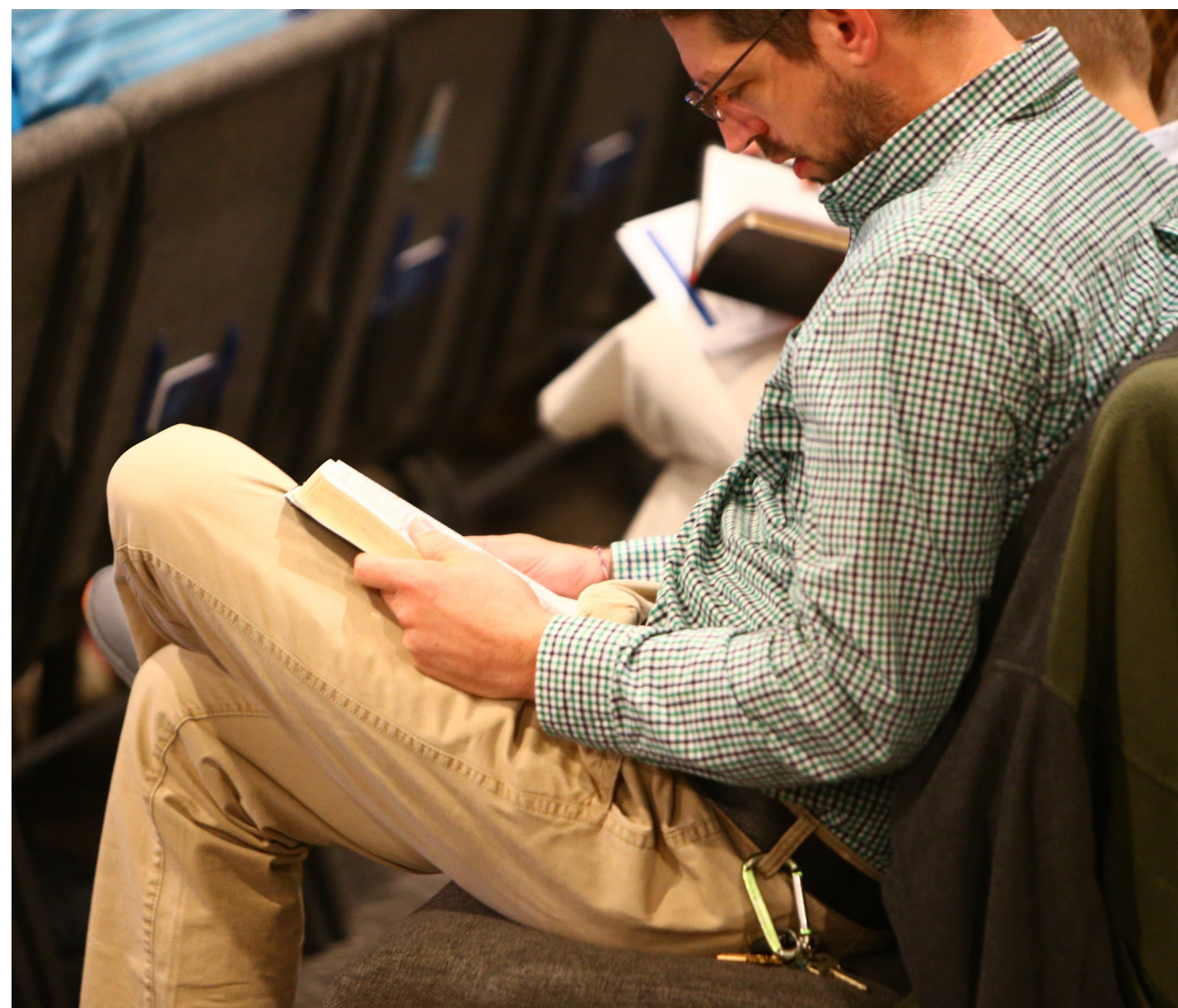
# SMALL GROUPS

**35**

**PEOPLE PARTICIPATED IN A  
10-WEEK ROOTED STUDY**

**The Rooted study consisted of daily devotions, a 24 hour fast, service projects, sharing testimonies, a prayer service, and concluded with a large celebration event for all the Rooted groups.**

**Many groups continue to meet as a small group following the completion of Rooted.**



# CARE

**Through a partnership with East Holmes Auto, as well as several businesses and individuals, Grace has been able to give car maintenance assistance to single mothers and widows that includes a free oil change and discounted auto repair services.**



# LOCAL OUTREACH

These are only a few of the highlights in 2024.  
Thank YOU for all your time and funds to make these events possible for our communities!



## 7 DONATION DRIVES & OUTREACH OPPORTUNITIES

Brewster Back to School Drive, Dental Kit Drive, Share A Christmas, Safe Harbor Diapers/Formula Drive, Lifeline Christian Mission Meal Packing, CAMO, T-County Stitchers

## NAOMI'S HEART

Naomi's Heart Widows Ministry was launched with monthly breakfasts, pie deliveries, re-landscaping a widow's home, and Christmas Celebration with local businesses donating **\$10,000** in gifts for the widows.



## THANKSGIVING

Served **650** free meals at Jitters Coffee House, Brewster Town Hall, and Mill Street Diner on Thanksgiving Day







## NIGHT TO SHINE

**80+** in attendance and **165** volunteers came together for an incredible prom night experience for people with Special Needs in February.



## HARVEST FEST

**400** families came to connect and have a good time together.



## MIDWEEK NIGHTS

Started a Thursday night program at Sugarcreek and served **40** free meals. **20** kids memorized the books of the bible.



## DRESSING LIL ANGELS

**300+** people came for free kids clothing at our Millersburg Campus in April and July.



# 20 YEARS OF BIKER SUNDAY

We celebrated our 20 year anniversary of **BIKER SUNDAY** with one last ride on Sunday, August 11 with close to **200** riders. We honored Lavern Schlachach and Jon Beachy for their excellent leadership. We love and appreciate all of our biker friends.





# MISSIONS



**28** MISSIONARIES & GOSPEL  
PARTNERS SUPPORTED



**\$193K+** SPENT ON LOCAL  
OUTREACH, CARE, & MISSIONS



SENT **112** PEOPLE ON  
SHORT TERM TRIPS





**Hosted two Golf Outings and one  
Pickleball Tournament.**

**Total donations received: \$475,713.21**

**Total staff: 23**

**58:12Rescue**  
Holmes County, Ohio



**58:12Thailand**  
Pattaya, Thailand

**58:12Haiti**  
Léogâne, Haiti



**58:12Kenya**  
Thika, Kenya

**58:12Uganda**  
Nakifuma, Uganda







**PICTURED: 58:12 GLOBAL DIRECTORS**

## **HOLMES COUNTY (58:12 RESCUE)**

- **20 Residents (7 women, 13 children)**
- **70 phone calls received**
- **Provided one-on-one mentorship for each resident**

## **THAILAND**

- **50-60 children ministered to at weekly kids clubs**
- **4 salvations, 1 baptism**
- **23 homes visited weekly**
- **Hosted second annual 58:12 Global Pastors Equip Conference**

## **HAITI**

- **3 Residents being cared for on campus**
- **Many gallons of water given out daily to the local community**
- **25-30 kids on average every week for kids club**
- **25 women attend the Reading Program each week**



## KENYA

- **Hosted 2 Equip Conferences** ministering to more than 250 pastors
- **3 widows and single mothers** received monthly support for food and essentials
- **20 pastors** were assisted in starting self-sustaining projects

## UGANDA

- **9 children** kept in school
- **2 children and 3 adults** were provided with a safe shelter
- **100+ kids** attended monthly kids club
- **Over \$50,000** raised to serve the most vulnerable in Uganda





# FOR THE GOSPEL CAMPAIGN

## FOR RURAL COMMUNITIES

Purchase Sugarcreek Campus Facility  
Estimate: **\$550,000** | Actual Cost: **\$561,350**

Renovate Millersburg Campus  
Estimate: **\$750,000** | Actual Cost: **\$1,045,155**

Launch Future Campuses  
Estimate **\$300,000** | Actual Cost: **\$103,448**

## FOR HEALTHY FAMILIES

Renovate Berlin Campus Family Life Area/Offices  
Estimate: **\$900,000** | Actual Cost: **\$1,190,358**

## FOR THE MOST VULNERABLE

Support for 58:12 Global Campuses in  
Holmes County, Thailand, and Haiti  
Estimate: **\$300,000** | Actual Cost: **\$100,000**

GIVING

Total Campaign Goal

**\$2,800,000**

Total Pledged

**\$2,887,844**

Pledged Amount Received

**\$2,778,423**

Non Pledged Giving

**\$126,010**

Total Received as of 12.31.24

**\$2,904,433**



# FINANCES

BECAUSE OF THE GENEROUS GIVING  
OF GRACE’S PARTNERS AND ATTENDEES,  
WE HAVE BEEN ABLE TO...

Give **\$41,500** in benevolence to widows,  
single moms, families, and individuals

Support **28** Grace Missionaries & Partners

Spend **\$34,000** on Local Outreach &  
Care in our communities

Send **112** people on Short Term  
Mission Trips

Serve **650** free meals on Thanksgiving

## ALL-CAMPUS GIVING

